

---

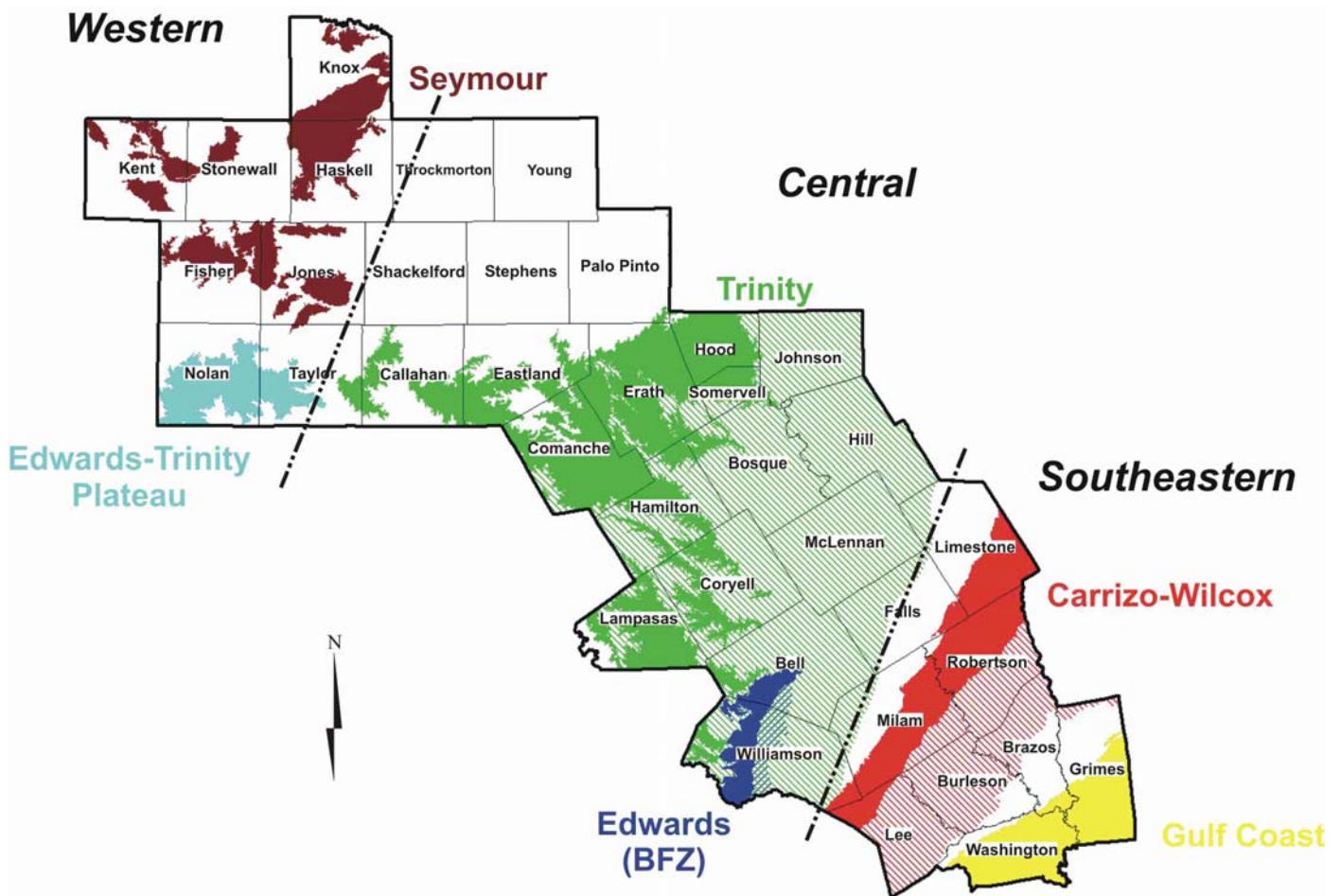
**Brazos G Regional Water Planning Group  
Groundwater Availability Workgroup**

**Review and Recommendations for  
Groundwater Availability Estimates  
for Specific Aquifer Systems**

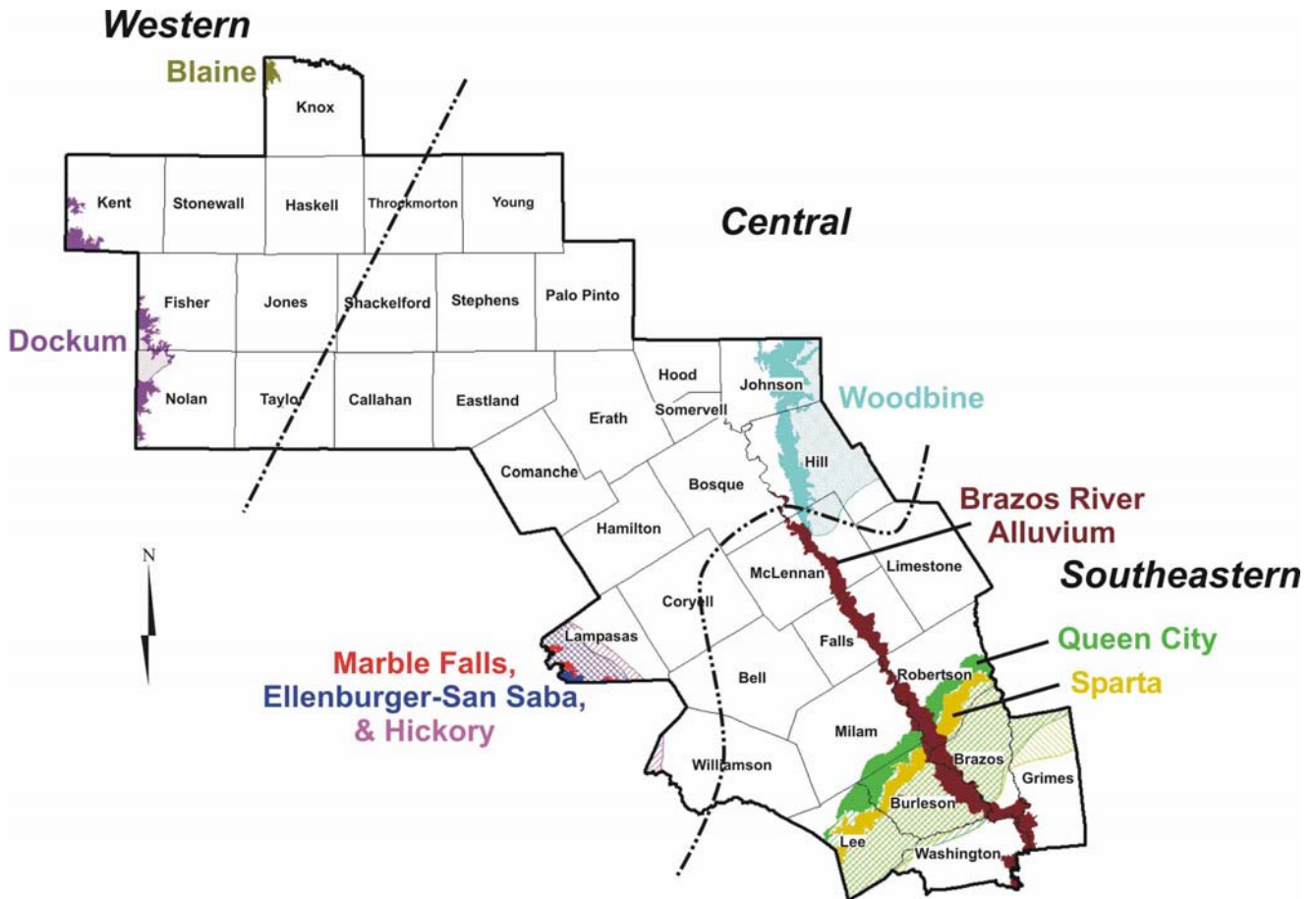
**David D. Dunn, P.E.**

**October 24, 2003**

# Major Aquifers in Brazos G



# Minor Aquifers in Brazos G



# Proposed Recommendations to BGRWPG

## Brazos G (2001) Groundwater Availability with Recommendations for 2006

<i>Aquifer</i>	<i>1996 Pumpage (acft)</i>	<i>Brazos G 2001 Availability (acft)</i>	<i>Recommendations</i>
<b>Western Area</b>			
Seymour	70,786	69,893	Review
Dockum	2,861	3,484	Review
Blaine	N/A	1,333	Accept
Edwards-Trinity Plateau	568	800	Review
<b>Central Area</b>			
Trinity	93,127	77,563	Accept
Edwards (BFZ)	16,255	5,000	Review with GAM
Woodbine	1,591	2,432	Accept
Marble Falls	N/A	4,183	Accept
Ellenburger-San Saba	N/A	551	Accept
<b>Southeastern Area</b>			
Brazos River Alluvium	24,846	66,700	Accept
Carrizo-Wilcox	96,523	280,936	Review with GAM
Queen City	2,275	3,459	Accept
Sparta	1,878	10,333	Accept
Gulf Coast	6,168	28,296	Accept