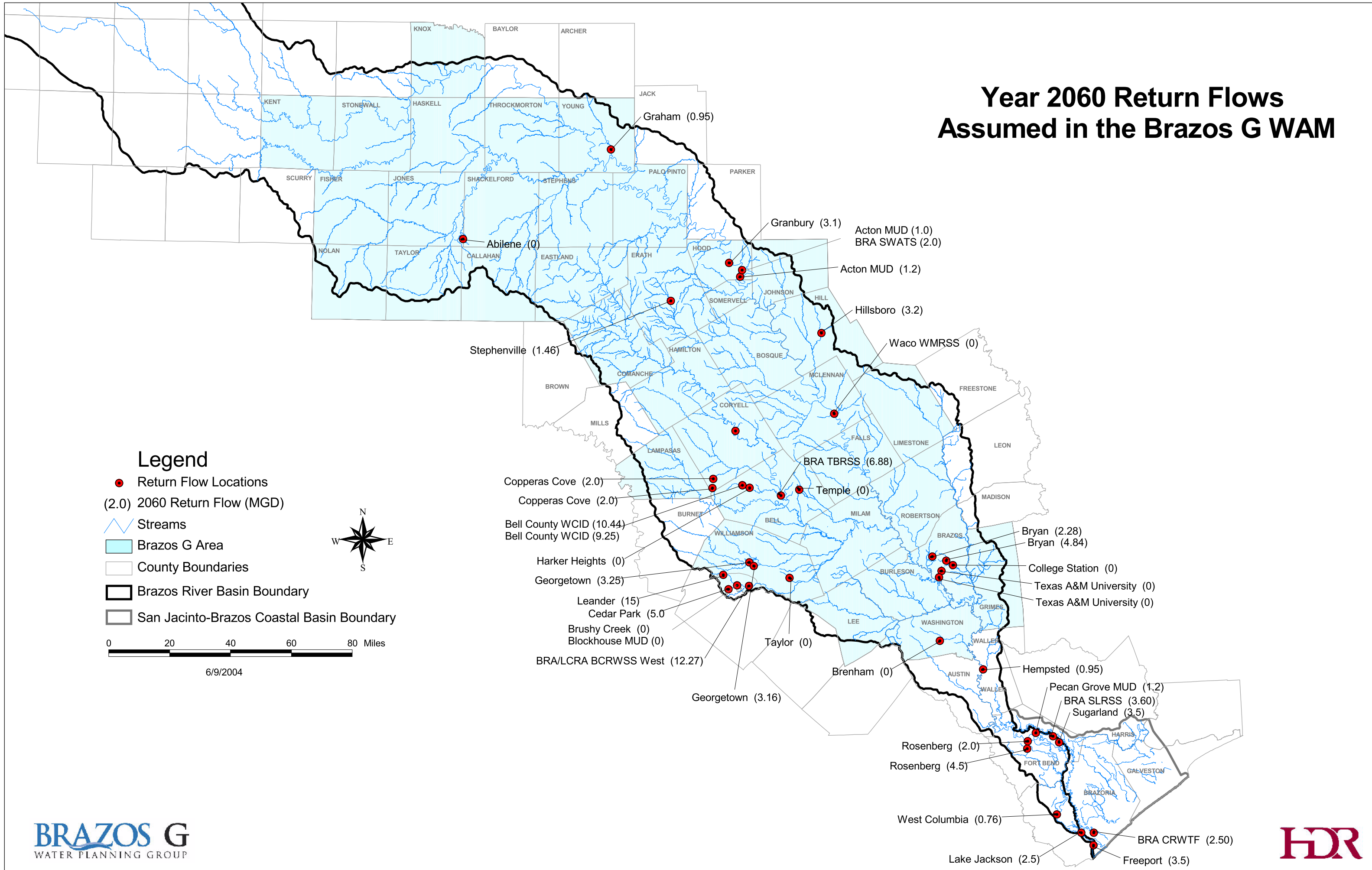


# Year 2060 Return Flows Assumed in the Brazos G WAM



6/9/2004

## Brazos G Return Flow Estimates

Facility	Stream	2000 Returns (MGD) <sup>1</sup>	2060 Returns (MGD) <sup>1</sup>	HDR Estimated 2060 Discharge (MGD) <sup>2</sup>	Confirmed Estimated 2060 Discharge (MGD) <sup>3</sup>
Acton MUD	Brazos River	0.09	1.73	0.88	1.20
Acton MUD	Brazos River	0.11	1.64	0.85	1.00
Bell County WCID	Nolan Creek	3.27	6.78	4.21	9.25
Bell County WCID	Nolan Creek	7.87	16.95	10.44	10.44
Block House MUD	Brushy Creek	0.22	2.57	1.34	0.00
BRA CRWTF	Brazos River	2.12	2.50	1.78	2.50
BRA SLRSS	Steep Bank Creek	3.69	4.94	3.39	3.60
BRA SWATS	Brazos River	0.28	2.00	1.07	2.00
BRA TBRSS	Nolan Creek	5.32	12.57	7.61	6.88
BRA/LCRA BCRWSS West	Brushy Creek	7.07	12.26	7.90	12.27
Brushy Creek MUD	Brushy Creek	0.21	2.18	1.14	0.00
City of Abilene	Deadman Creek	11.36	12.90	9.29	0.00
City of Brenham	Hog Branch	1.61	2.05	1.43	0.00
City of Bryan	Trib to Carters Creek	4.46	7.45	4.84	4.84
City of Bryan	Still Creek	1.66	3.73	2.28	2.28
City of Cedar Park	Unnamed Trib to Brushy Creek	1.51	21.04	10.90	5.00
City of College Station	Carters Creek	5.45	10.87	6.80	0.00
City of Copperas Cove	Clear Creek	0.47	1.59	0.91	2.00
City of Copperas Cove	House Creek	1.42	2.43	1.57	2.00
City of Freeport	Brazos River	1.36	3.14	1.91	3.50
City of Gatesville-2	Leon River	1.21	3.59	2.10	2.10
City of Georgetown	San Gabriel River	1.67	5.66	3.25	3.25
City of Georgetown	Unnamed Trib to San Gabriel River	0.54	6.06	3.16	3.16
City of Graham	Salt Creek	0.97	0.95	0.73	0.95
City of Granbury	Brazos River	0.73	1.91	1.14	3.10
City of Harker Heights	Nolan Creek	1.15	3.16	1.87	0.00
City of Hempstead	Brazos River	0.23	1.19	0.65	0.95
City of Hillsboro	Hackberry Creek	0.90	1.22	0.84	3.20
City of Lake Jackson	Brazos River	2.50	3.74	2.50	2.50
City of Leander	Brushy Creek	0.48	2.99	1.61	15.00
City of Rosenberg	Brazos River	1.21	2.24	1.42	2.00
City of Rosenberg-1	Seabourne Creek	1.30	3.36	2.00	4.50
City of Stephenville	North Bosque River	1.17	2.33	1.46	1.46
City of Sugarland	Steep Bank Creek	3.88	4.55	3.25	3.50
City of Taylor	Mustang Creek	1.44	3.00	1.86	0.00
City of Temple	Unnamed Trib to Little Elm Ck	2.06	2.06	1.54	0.00
City of Waco WMRSS	Brazos River	21.92	28.35	19.66	0.00
City of West Columbia	Brazos River	1.02	0.73	0.76	0.76
Pecan Grove MUD	Unnamed Trib to the Brazos River	1.05	1.35	0.93	1.20
Texas A&M University	Brazos River	1.74	1.74	1.30	0.00
Texas A&M University	Unnamed Trib to White Creek	1.05	1.05	0.79	0.00
<b>Total:</b>		<b>107.76</b>	<b>212.54</b>	<b>133.37</b>	<b>116.40</b>

<sup>1</sup> 2000 and 2060 Return flow estimates derived from Brazos WAM  
<sup>2</sup> Estimated assuming 75% of Y2000 will continue to be discharged (assumed 25% reuse) and 50% of discharges in excess of Y2000 levels will be discharged (50% reuse of any future effluent)  
<sup>3</sup> Estimate provided by facility