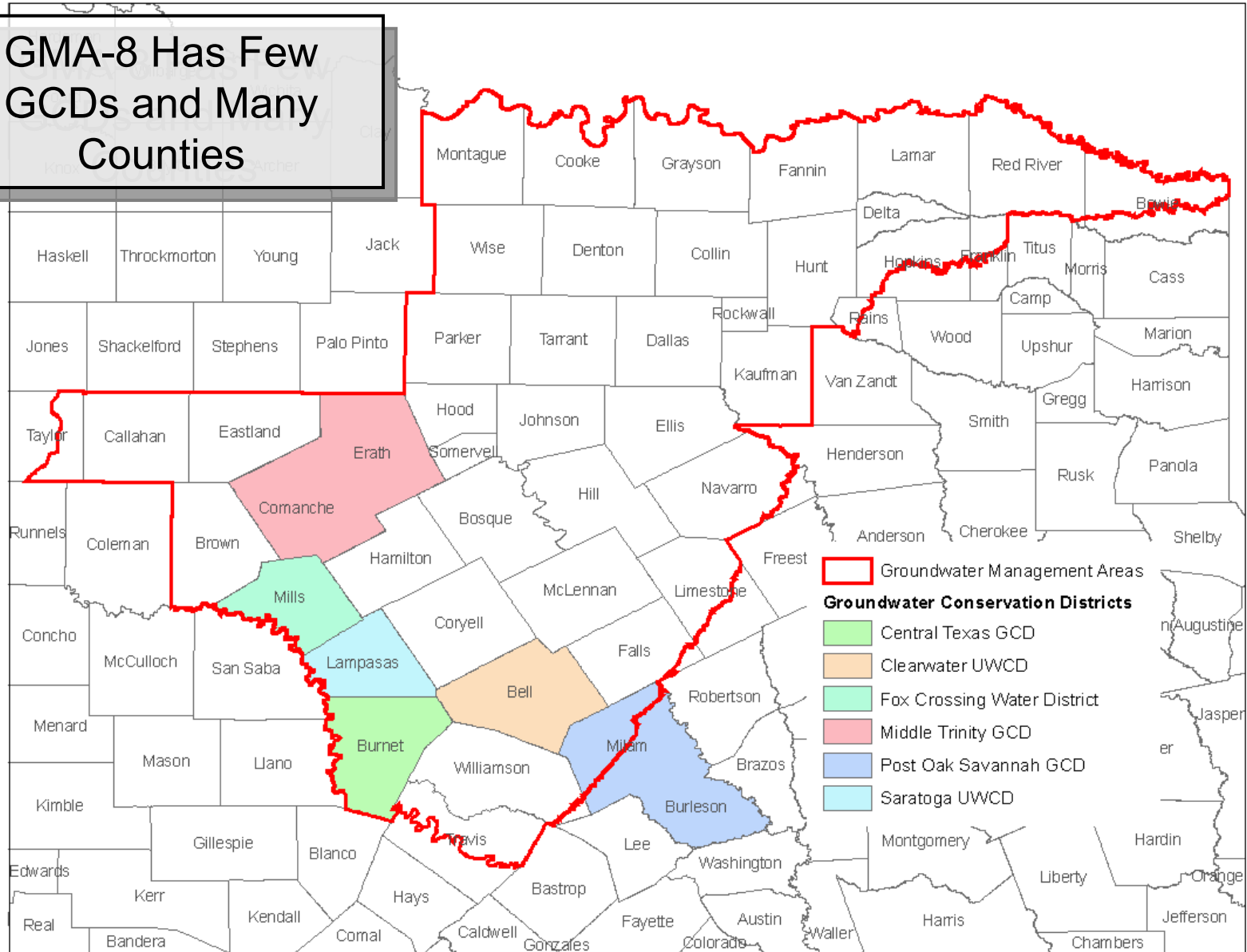


Groundwater Management Area 8 Progress Report

June 20, 2007

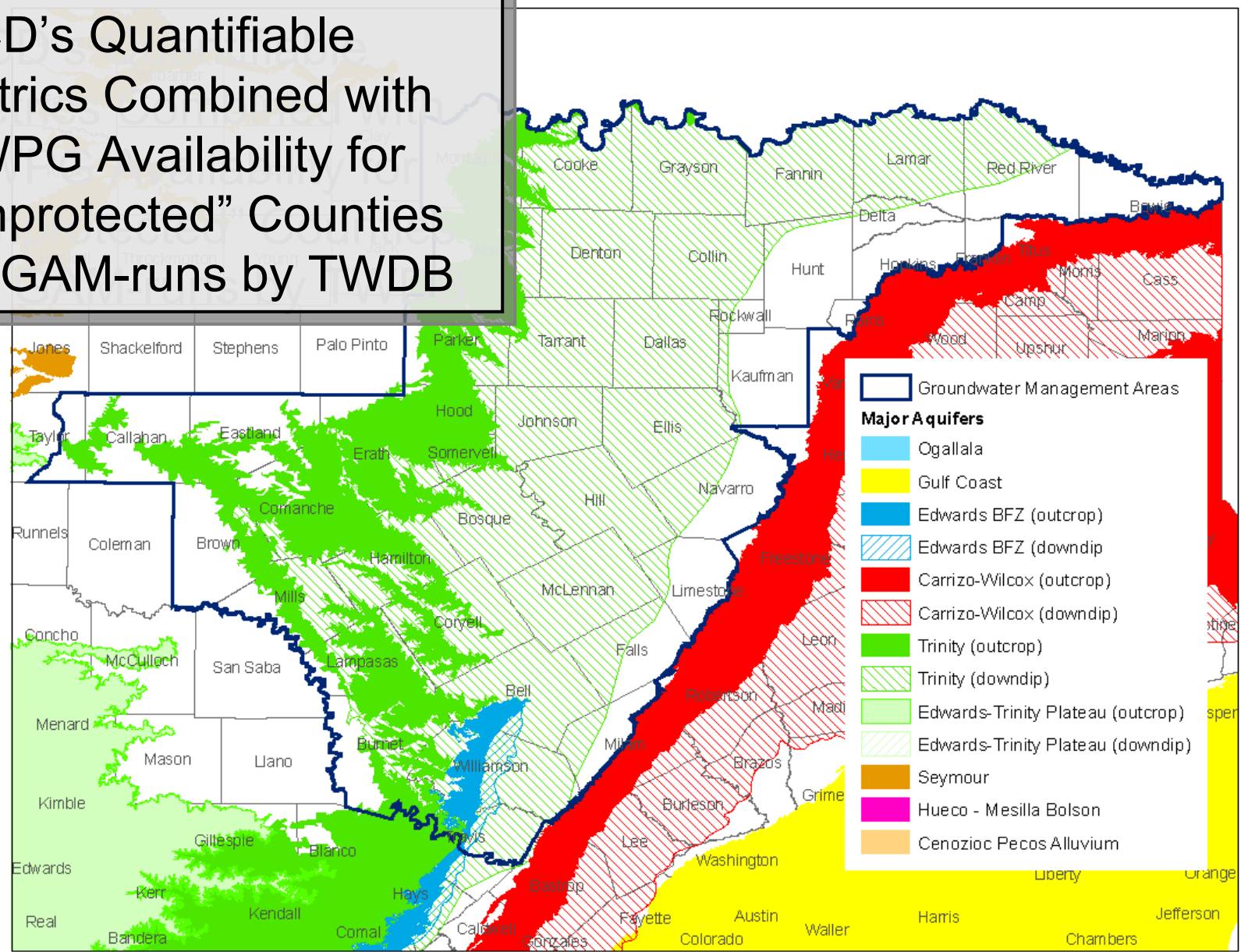
GMA-8 Has Few GCDs and Many Counties



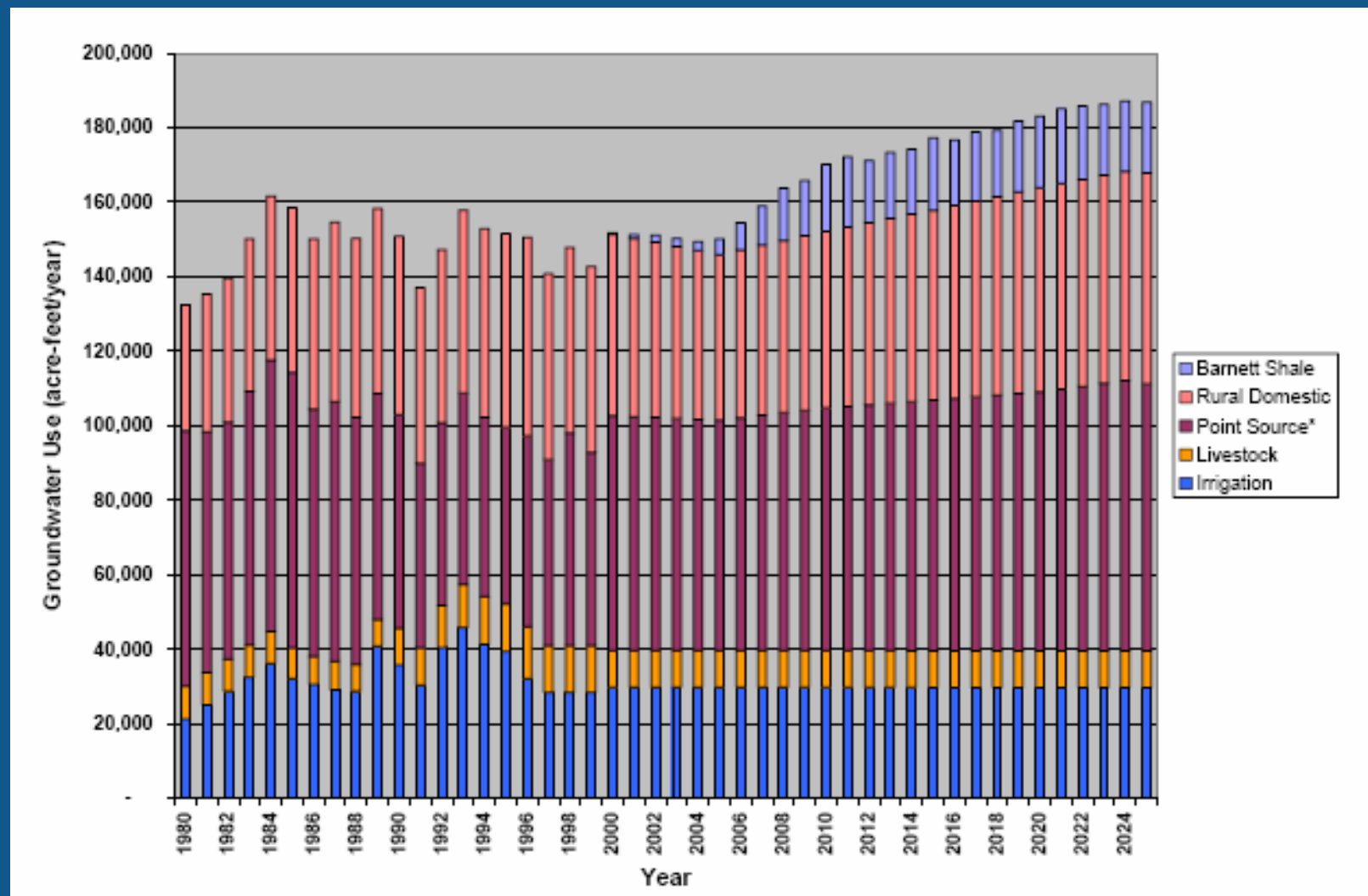
GMA-8 Project Approach Goals:

- Use resources available at GMA-8 member GCDs, State Agencies and Consulting Products to manage costs
- Web Site to increase information processing
- To complete the GMA-8 process by December-2007

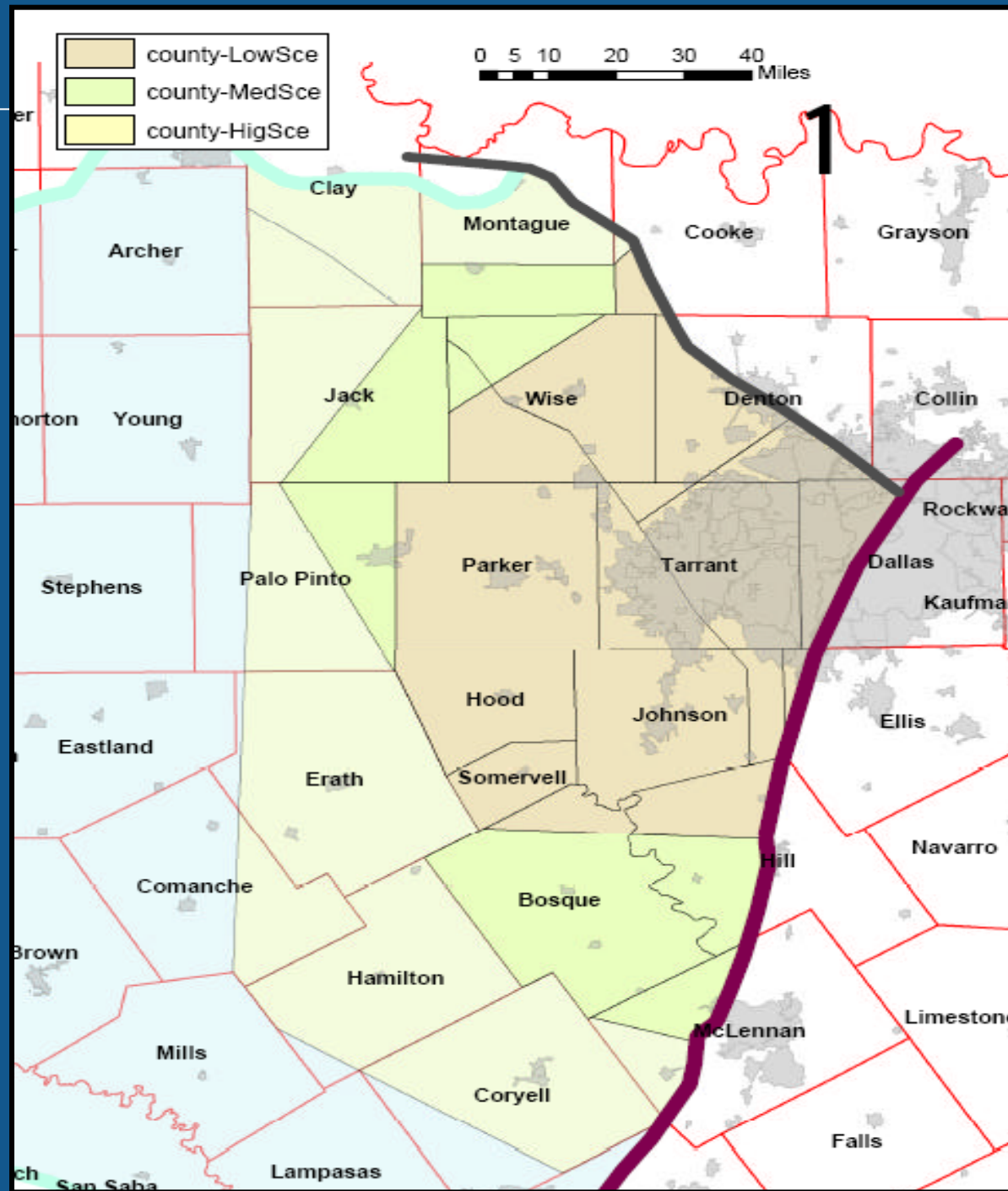
Major Aquifers –
 GCD's Quantifiable Metrics Combined with RWPG Availability for "Unprotected" Counties for GAM-runs by TWDB



New TWDB High Demand Estimate



GMA-8 included
Medium Demand
Scenario in N.
Trinity GAM-run
request



GMA-8 Major Aquifer Progress:

- N. Trinity / Woodbine GAM-run request submitted to TWDB
- 2 GAM-run requests submitted to TWDB for N. Edwards aquifer

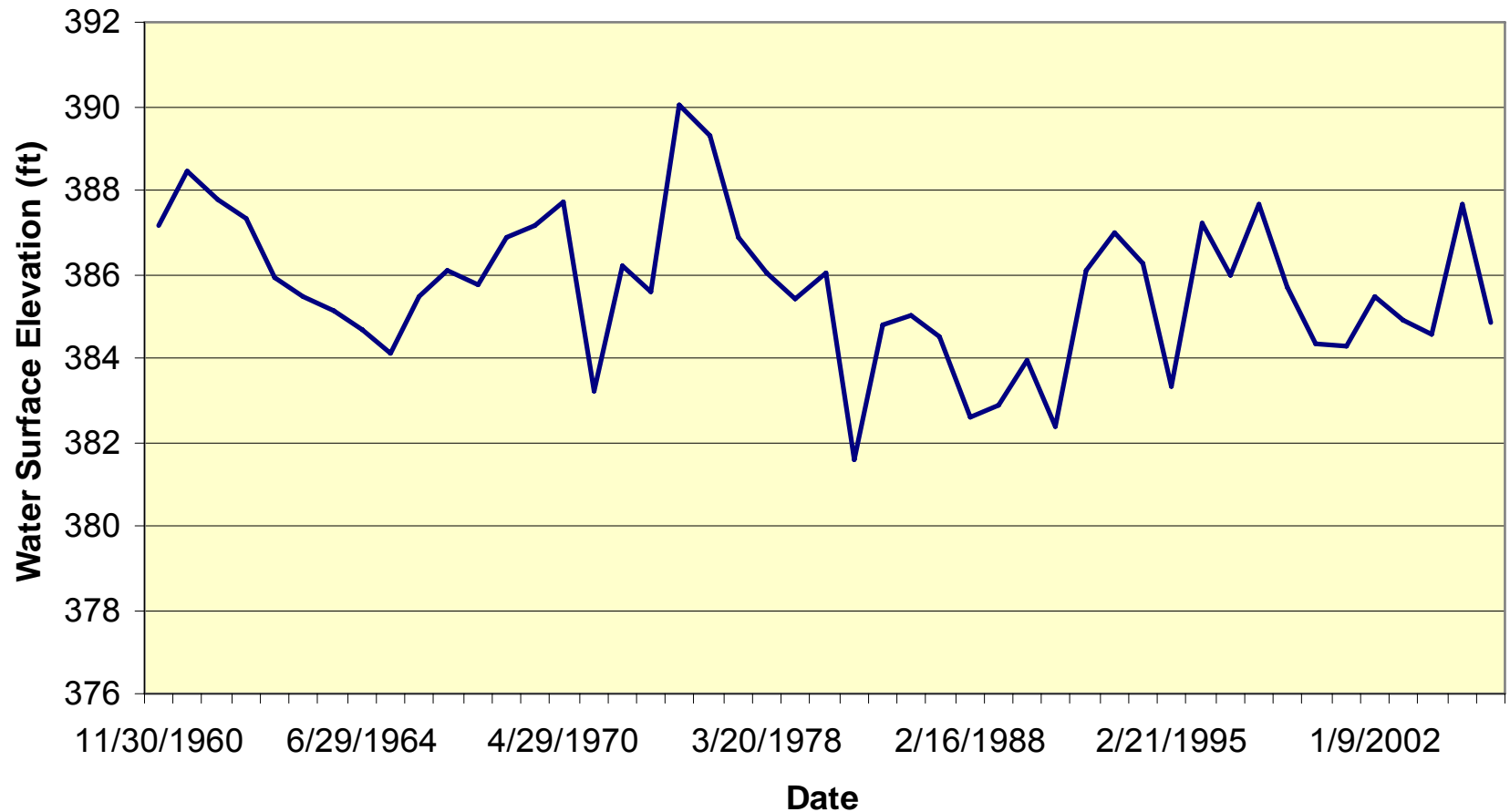
Mc Lennan County

% of saturated thickness maintained	GW availability from storage (ac-ft/yr)	GW availability from recharge (ac-ft/yr)	Total availability (ac-ft/yr)
100%	0	14375	14375
99%	69	14375	14444
98%	139	14375	14513
97%	208	14375	14583
96%	278	14375	14652
95%	347	14375	14722
94%	416	14375	14791
93%	486	14375	14860
92%	555	14375	14930
91%	625	14375	14999
90%	694	14375	15069

Sat. Thickness	35	(ft)	=
Recharge Area	66090	(acres)	
Effective porosity	0.15	(fraction)	=
Time	50	(yr)	
Rainfall Rate	2.9	(ft/yr)	=
Recharge Rate	0.075	(fraction)	

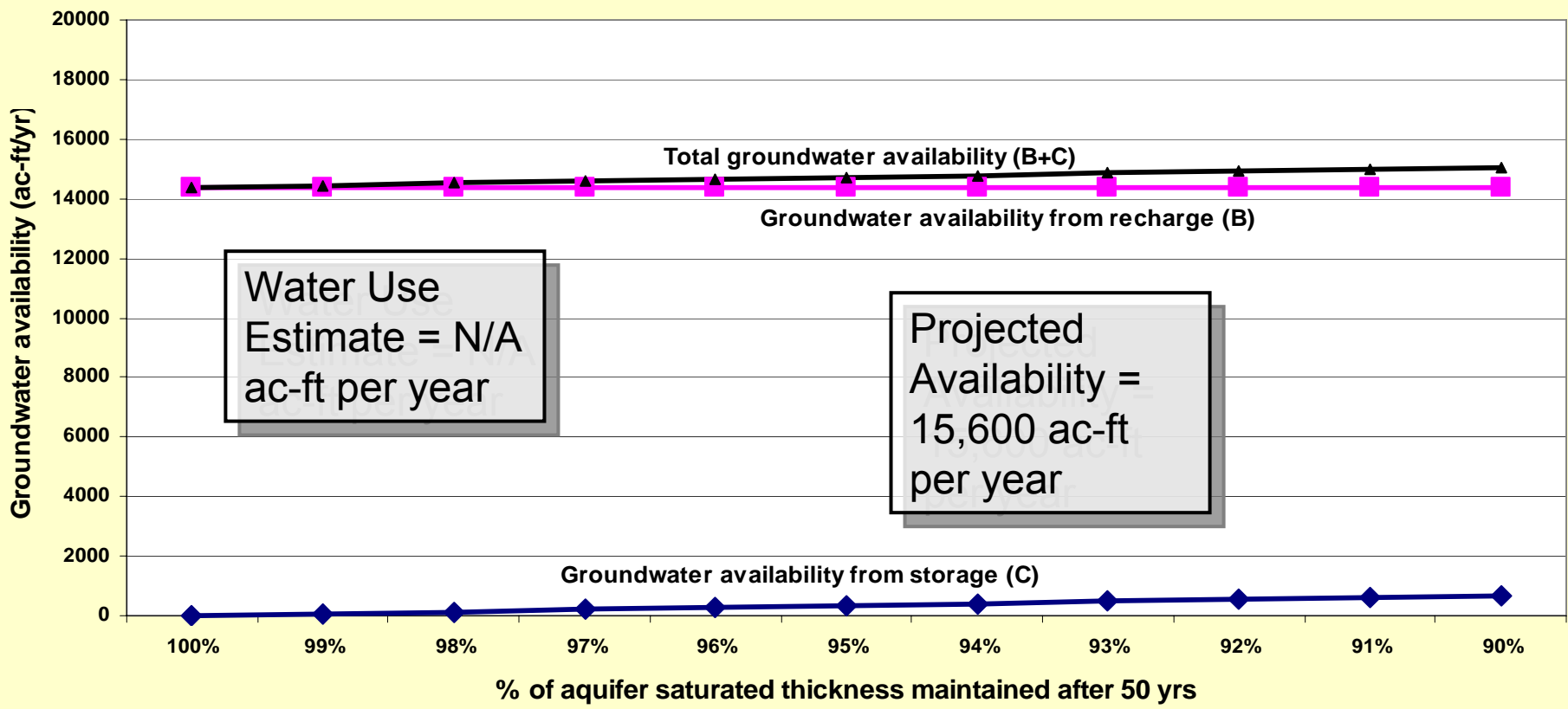
Mc Lennan County

Brazos River Alluvium in McLennan County (SWN 4023801)



Mc Lennan County

McLennan County - Brazos River Alluvium Aquifer Groundwater Availability (ac-ft/yr)



GCD Responsibilities in GMA-8:

- Assign GCDs to Collection of RWPG and Agency Data
- Development of Web-Site
- Preparation of RWPG and Agency Data for Consideration
- Evaluation of Minor Aquifer Model Results to Identify Quantifiable Metric for DFC

The Road Ahead for GMA-8:

- Welcome 4 New Member GCDs!
- Submit Minor Aquifer DFCs to TWDB
- Consider GAM results for Major Aquifers
- Complete process by December 2007